

ADC64 Rev H

Analog filter disable

A/D range select headers

A/D Ch# JP#

Ch#

0 8
1 9
2 19
3 18
4 13
5 14
6 23
7 24

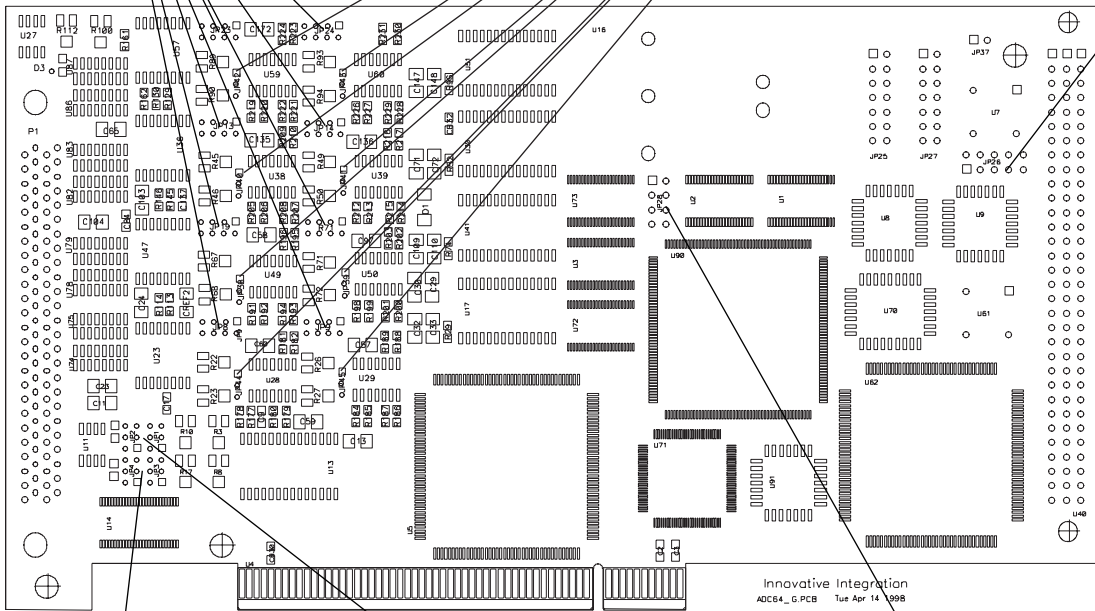
0 JP44
1 JP45
2 JP38
3 JP39
4 JP40
5 JP41
6 JP42
7 JP43

1-3 +/-5V
2-4 +/-2.5V
3-5 +/-10V
1-3,7-8 0V-10V
1-3,6-8 -10V-0V

1-2 No filter
 2-3 Filter enabled



Factory Test
DO NOT CONNECT



Innovative Integration
ADC64_G.PCB Tue Apr 14 1998

JP3,4 D/A Ch#1 Output Range Selection
JP1,2 D/A Ch#0 Output Range Selection

JP28 Processor Interrupt Selection

Output Jumper Setting
 +/-10V JP3=1-2,JP4=None
 +/-5V JP3=3-4,JP4=None
 +/-2.5V JP3=5-6,JP4=None
 0V-10V JP3=3-4,JP4=4-6
 -10V-0V JP3=3-4,JP4=2-4

Output Jumper Setting
 +/-10V JP1=1-2,JP2=None
 +/-5V JP1=3-4,JP2=None
 +/-2.5V JP1=5-6,JP2=None
 0V-10V JP1=3-4,JP2=4-6
 -10V-0V JP1=3-4,JP2=2-4

1-2 PCI Write FIFO Empty (INT0)
 3-4 PCI Read FIFO Full (INT1)
 5-6 Analog Converter Interrupt (INT2)
 7-8 PCI Bus Interrupt (INT3)

